

# WEST AVENUE SECTIONS A & B



SECTION A-A  
SCALE 1"=10'



SECTION B-B  
SCALE 1"=10'

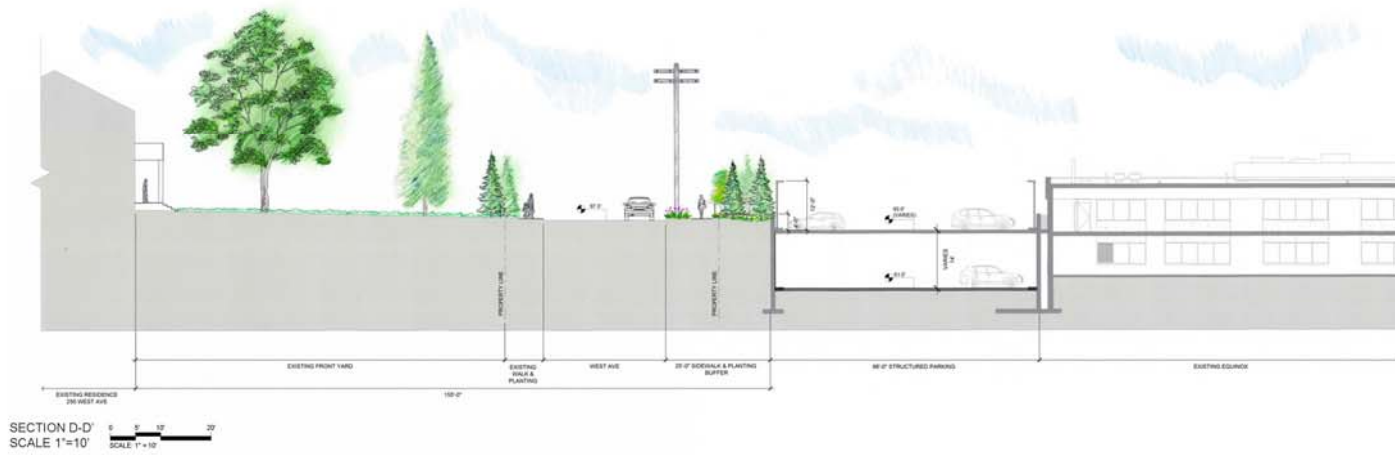
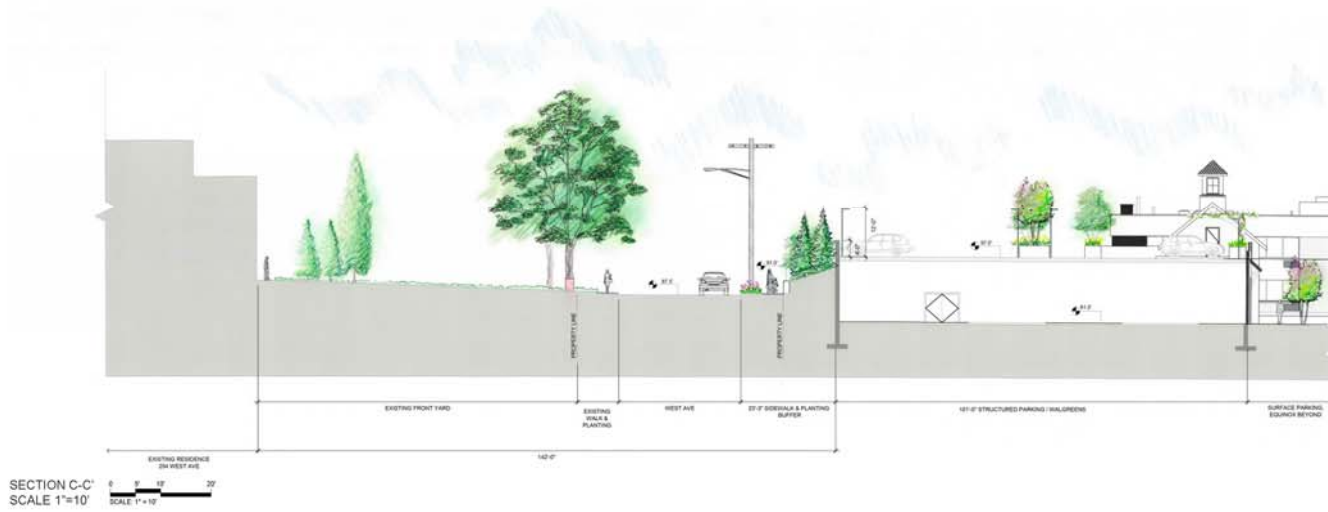
**Clinton & Associates, PC**  
Landscape Architects  
5300 Badolier Avenue, Suite 201  
Noroton Heights, CT 06460  
P: 860-499-5468 F: 860-499-1346  
www.Clinton-LA.com



**THE COMMONS AT NOROTON HEIGHTS**  
Noroton Avenue/ Heights Road  
Darien, Connecticut

Sheet #	WEST AVENUE SECTIONS			
Project #	16013	Date	10/06/05	1/7
Drawn By		Checked By		
Revisions				

# WEST AVENUE SECTIONS C & D



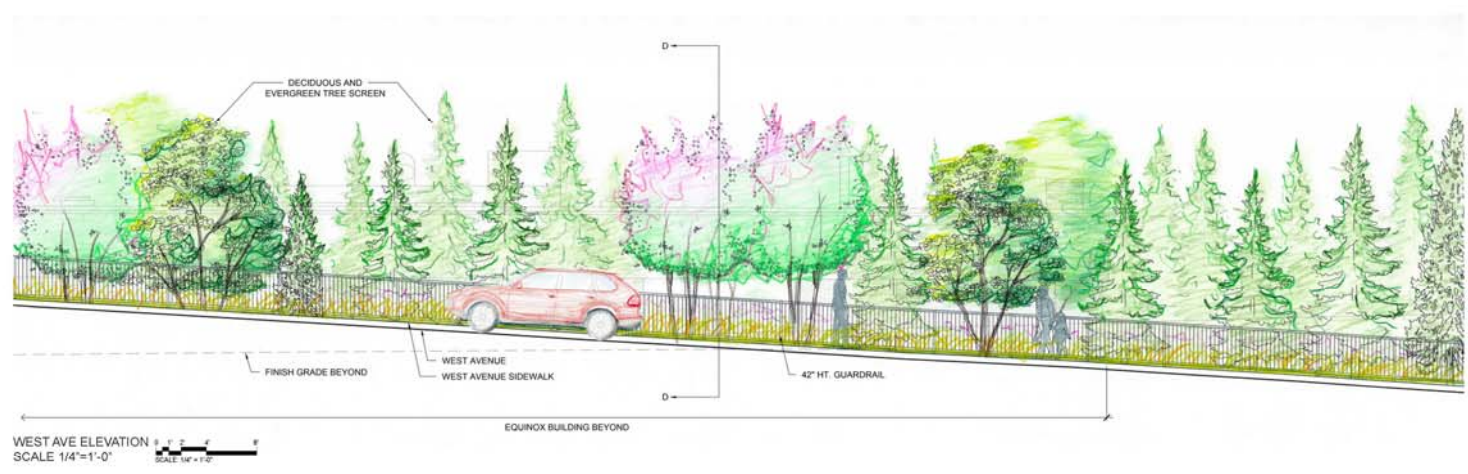
Clinton & Associates, P.C.  
Landscape Architects  
5300 Badolier Avenue, Suite 201  
Noroton Heights, CT 06856  
P: 861-495-5468 F: 861-495-1146  
www.Clinton-LA.com



THE COMMONS AT NOROTON HEIGHTS  
Noroton Avenue/ Heights Road  
Darien, Connecticut

Sheet #	L1.06			
Title	WEST AVENUE SECTIONS			
Project #	16013	Date	10/06/02/17	Checked By
Drawn By		Scale	1"=10'	Checked By
Revisions				
#	Date	By	Description	

# WEST AVENUE SECTION E AND ELEVATION



**Clinton & Associates, PC**  
Landscape Architects  
5300 Dullimore Avenue, Suite 201  
Noroton Heights, CT 06860  
P: 860-499-5466 F: 860-499-1146  
www.Clinton-LA.com



**THE COMMONS AT NOROTON HEIGHTS**  
Noroton Avenue/ Heights Road  
Darien, Connecticut

Sheet #	L1.07			
Title	WEST AVENUE SECTION AND ELEV.			
Project #	16013	Date	06/02/17	Checked By
Drawn By		Date		Checked By
Revisions				
#	Date	Description		