



# DARIEN PLACE

Darien, CT

## ABBREVIATIONS

AC	AIR CONDITIONER	FE	FIRE ESCAPE	PHL	PANEL
ACT	ACOUSTICAL TILE	FPC	FIRE EXTINGUISHER CABINET	PROP	PROPERTY
AD	AREA DRAIN	FHV	FIRE HOSE VALVE	PS	POUNDS PER SQUARE INCH
ADJ	ADJACENT	FPC	FIREPROOFED SELF-CLOSING	PT	PRESSURE TREATED
ADJUST	ADJUSTABLE	GA	GAUGE	PTD	PAINTED
AFP	ABOVE FINISH FLOOR	GL	GLASS	QT	QUARTRY TILE
ALUM	ALUMINUM	GALV	GALVANIZED	R	RISER
AOR	AREA OF REFUGE	GFI	GROUND FAULT INTERRUPTER	RFR	REFRIGERANT
APT	APARTMENT	OWS	GYPSUM WALL BOARD	REF	REFERENCE
ATTEN	ATTENTION	HC	HOLLOW CORE	REQ	REQUIRED
BRD	BOARD	HM	HOLLOW METAL	REV	REVISION
BPP	BUILDING POWER PANEL	HMC	HOUSING MAINTENANCE	RD	ROOF DRAIN
CAB	CABINET	HR	HOUR	RO	ROUGH OPENING
CEM	CEMENT	HT	HEIGHT	RTD	RATED
CER	CERAMIC	HVAC	HEATING VENTILATION & AIR	SCH	SCHEDULE
CH	CEILING HEIGHT	HW	HOT WATER	SD	SMOKE DETECTOR
CIC	CIRCUIT	IS	INSULATION	SEC	SECTION
CL	CERAMIC TILE	NC	NO. OF DIAMETER	SF	SQUARE FOOT
CMU	CONCRETE MASONRY	NSUL	INSULATION	SPEC	SPECIFICATION
CPM	CIRC. FEET PER LINEAL	INT	INTERIOR	S	SQUARE
CR	CIRCUIT BREAKER UNIT	LTL	LINTEL	STL	STEEL
CLD	CEILING	MAB	MASONRY	STFRNT	STREET FRONT
COL	COLUMN	MATL	MATERIAL	SUSP HT	SUSPENDED HEIGHT
COMP	COMPOSITE	MAX	MECHANICAL	T	TREAD
COHC	CONCRETE	MECH	MECHANICAL	THICKNES	THICKNESS
CONT	CONTINUOUS	MET	METAL	THRU FRM	THROUGH FRAME
DA	DROPPED ARCH	MFR	MANUFACTURER	TOP OF CURB	TOP OF CURB
DF	DRAINING FOUNTAIN	MN	MASONRY	TYP	TYPICAL
DI	DIAMETER	MO	MASONRY OPENING	UNFIN	UNFINISHED
DM	DIAMENSION	MS	MANGLE SADDLE	VEST	VESTIBULE
DTL	DETAIL	MTD	MOUNTED	VB	VANITY BASIN
DWG	DRAWING	MTL	METAL	VCT	VINYL COMPOSITION TILE
ESLC	ELECTRICAL	NC	NOT IN CONTRACT	VP	VEEP IN FIELD
ELEV	ELEVATION	NO	NOT TO SCALE	W	WITH
EQ	EQUAL	NTB	NOT TO SCALE	WC	WALL COVERING
EXIST	EXISTING	OC	ON CENTER	WCLB	WATER CLOSET
EXT	EXTERIOR	OD	OUTSIDE DIAMETER	W/O	WITHOUT
FA	FRESH AIR INLET	OPN	OPENING	W	WOOD
FC	FIRE CODE	OPPL	OPENING	WDR	WINDOW
FD	FLOOR DRAIN	PLANS	PROPERTY LINE	WR	WATER RESISTANT
BLDG	BUILDING	PL	PLASTER	WYD	WELDED WIRE MESH

## SYMBOL LEGEND

	DETAIL ON INDICATED SHEET
	ELEVATION DETAIL
	CASEWORK ELEVATION
	SECTION ON INDICATED SHEET
	SPOT ELEVATION
	ELEVATION CHANGE
	DOOR TAG
	WINDOW TAG
	REVISION CLOUD AND NUMBER
	MUDROOM
	STONE
	HOSE BIB
	SMOKE DETECTOR / COVER WINDOW DETECTOR

## PROJECT TEAM

**ARCHITECT**  
 JAMES SCETTINO ARCHITECTS  
 17 GROVE STREET  
 NEW CANAAN, CT 06840  
 CONTACT: JIM SCETTINO  
 P: (203) 966-5552  
 F: (203) 966-7810  
 jim@scettinoarchitects.com

**SURVIVOR**  
 WILLIAM W. SEYMOUR & ASSOC. PC  
 170 NOROTON AVE  
 DARIEN, CT 06820  
 CONTACT: GARY KEDDO  
 P: (203) 656-3331  
 F: gk@wvs-la.com

**SITE ENGINEER**  
 LANDTECH ENGINEERS  
 518 RIVERSIDE AVE  
 WESTPORT, CT 06880  
 CONTACT: PETER ROMANO  
 P: (203) 454-2110  
 F: promano@landtechconsult.com

**STRUCTURAL ENGINEER**  
 THE DISALVO ENGINEERING GROUP  
 83 WOOSTER HEIGHTS RD  
 DANBURY, CT 06810  
 CONTACT: BRUCE RICHARDSON  
 P: (203) 490-4140  
 F: bruce@tdeg.com

**MEP ENGINEER**  
 PEG PETERSON ENGINEERING LLC  
 25 VAN ZANT STREET  
 NORWALK, CT 06855  
 CONTACT: DONALD C. PETERSON  
 P: (203) 810-4101 office  
 F: dcpeterson@peg-eng.com

## SHEET INDEX

A0.1	TITLE SHEET
A2.1	FIRST FLOOR PLAN
A2.2	SECOND FLOOR PLAN
A5.1	NORTH ELEVATION
A5.2	WEST ELEVATION
A5.3	EAST ELEVATION
A5.4	NORTH EAST VIEW



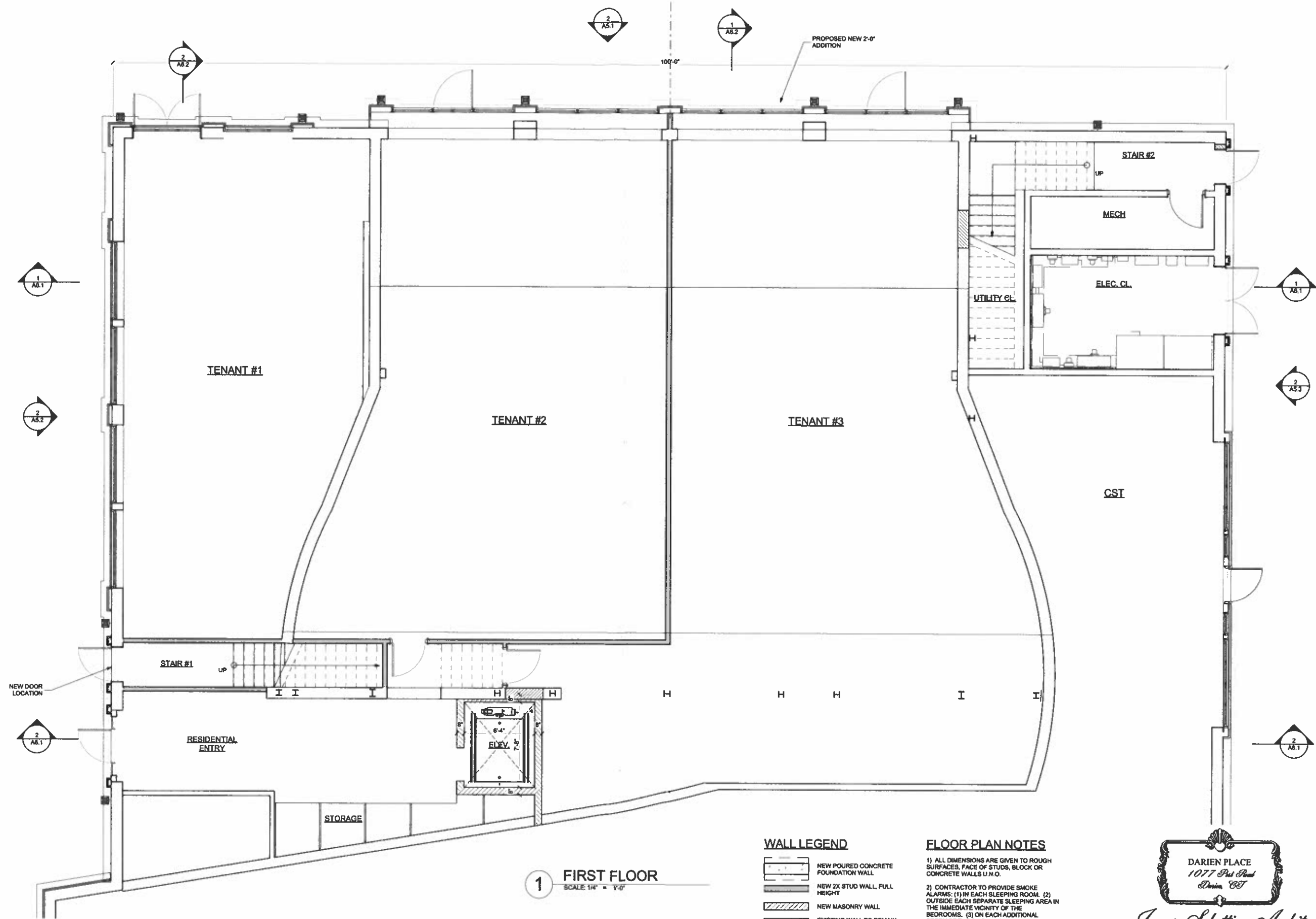
*James Scettino Architects* JOB# 1915  
 203.966.5552 Fax 203.966.7810  
 17 Grove Street, New Canaan, Connecticut 06840  
 www.scettinoarchitects.com

Revised:  
 01/10/20  
 01/14/20  
 02/04/20

Sheet:  
 A0.1


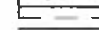

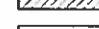

02.04.2020 - ARB SUBMITTAL

Division of Instruments of Service  
 All plans, specifications, cost fees and instruments prepared by Scettino Architects or instruments of service shall remain the property of Scettino Architects. The architect shall retain all common law, statutory and other reserved rights, including, without limitation, the copyright therein.



**1 FIRST FLOOR**  
SCALE: 1/4" = 1'-0"

**WALL LEGEND**

-  NEW POURED CONCRETE FOUNDATION WALL
-  NEW 2X STUD WALL, FULL HEIGHT
-  NEW MASONRY WALL
-  EXISTING WALL TO REMAIN
-  EXISTING WALL TO BE REMOVED

**FLOOR PLAN NOTES**

- 1) ALL DIMENSIONS ARE GIVEN TO ROUGH SURFACES, FACE OF STUDS, BLOCK OR CONCRETE WALLS U.N.O.
- 2) CONTRACTOR TO PROVIDE SMOKE ALARMS: (1) IN EACH SLEEPING ROOM. (2) OUTSIDE EACH SEPARATE SLEEPING AREA IN THE IMMEDIATE VICINITY OF THE BEDROOMS. (3) ON EACH ADDITIONAL STORY OF THE DWELLING, INCLUDING BASEMENTS.
- 3) CONTRACTOR TO VERIFY HVAC AND LIGHTING LAYOUT WITH FRAMING PLAN.



*James Schettino Architects*

203.966.5552 Fax 203.966.7810  
 17 Fox Street, New Canaan, Connecticut 06840  
 www.schettinoarchitects.com

02.04.2020 - ARB SUBMITTAL

Ownership of Instruments of Service  
 All plans, specifications, contracts and instruments prepared by Schettino Architects or instruments of service shall remain the property of Schettino Architects. The architect shall retain all common law, statutory and other reserved rights, including, without limitation, the copyright therein.



**1 SECOND FLOOR**  
SCALE: 1/4" = 1'-0"

**WALL LEGEND**

	NEW POURED CONCRETE FOUNDATION WALL
	NEW 2X STUD WALL, FULL HEIGHT
	NEW MASONRY WALL
	EXISTING WALL TO REMAIN
	EXISTING WALL TO BE REMOVED

- FLOOR PLAN NOTES**
- 1) ALL DIMENSIONS ARE GIVEN TO ROUGH SURFACES, FACE OF STUDS, BLOCK OR CONCRETE WALLS U.N.O.
  - 2) CONTRACTOR TO PROVIDE SMOKE ALARMS: (1) IN EACH SLEEPING ROOM, (2) OUTSIDE EACH SEPARATE SLEEPING AREA IN THE IMMEDIATE VICINITY OF THE BEDROOMS, (3) ON EACH ADDITIONAL STORY OF THE DWELLING, INCLUDING BASEMENTS.
  - 3) CONTRACTOR TO VERIFY HVAC AND LIGHTING LAYOUT WITH FRAMING PLAN.

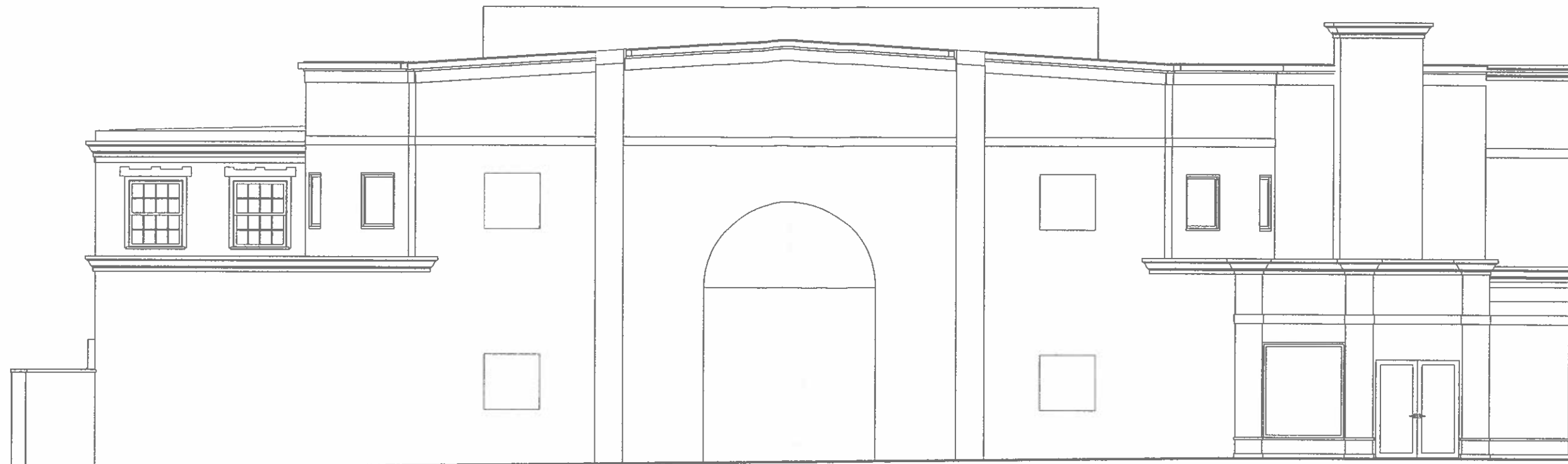


*James Schettino Architects* JOB# 1915  
 203.966.5552 Fax 203.966.7810  
 17 Cove Street, New Canaan, Connecticut 06840  
 www.schettinoarchitects.com A2.2

02.04.2020 - ARB SUBMITTAL

DATE: 02/04/2020 11:00 AM  
 ALL plans, specifications, and drawings and instruments prepared by Schettino Architects as instruments of service shall remain the property of Schettino Architects. The architect shall retain all common law, statutory and other reserved rights, including, without limitation, the copyright therein.





1 NORTH ELEVATION - EXISTING  
SCALE: 1/4" = 1'-0"



2 NORTH ELEVATION - PROPOSED  
SCALE: 1/4" = 1'-0"



*James Schettino Architects*

JOB# 1915

203.966.5552 Fax 203.966.7810  
17 Free Street, New Canaan, Connecticut 06840  
www.schettinoarchitects.com

A5.1

Revised:  
01/10/20  
01/14/20  
02/04/20

02.04.2020 - ARB SUBMITTAL

Ownership of Instruments of Service  
All plans, specifications, cost fees and instruments prepared by Schettino Architects or instruments of service shall remain the property of Schettino Architects. The architect shall retain all common law, statutory and other reserved rights, including, without limitation, the copyright therein.



1 WEST ELEVATION - EXISTING  
SCALE: 1/4" = 1'-0"



2 WEST ELEVATION - PROPOSED  
SCALE: 1/4" = 1'-0"



*James Schettino Architects*

JOB# 1915

Revisions:  
01/10/20  
01/14/20  
02/04/20

203.966.5552 Fax 203.966.7810

Arch

17 Pine Street, New Canaan, Connecticut 06840  
www.schettinoarchitects.com

A5.2

02.04.2020 - ARB SUBMITTAL

Consent to Instruments of Service  
All plans, specifications, cost fees and instruments prepared by Schettino Architects as instruments of service shall remain the property of Schettino Architects. The architect shall retain all common law, statutory and other reserved rights, including, without limitation, the copyright therein.



**1 EAST ELEVATION - EXISTING**  
SCALE: 1/4" = 1'-0"



**2 EAST ELEVATION - PROPOSED**  
SCALE: 1/4" = 1'-0"



*James Schettino Architects* JOB# 1915

203.966.5552 Fax 203.966.7810  
17 Grove Street New Canaan, Connecticut 06840  
www.schettinoarchitects.com

Revisions:  
01/10/20  
01/14/20  
02/04/20

A5.3

02.04.2020 - ARB SUBMITTAL

Disclaimer of Instruments of Service  
All plans, specifications, and fees and instruments prepared by Schettino Architects as instruments of service shall remain the property of Schettino Architects. The architect shall retain all copyright, statutory and other reserved rights, including, without limitation, the copyright therein.





1 EXISTING VIEW



2 PROPOSED VIEW

DISCLAIMER: ALL INSTRUMENTS OF SERVICE  
 All plans, specifications, and fees and instruments prepared by  
 Schettino Architects or instruments of service shall remain the  
 property of Schettino Architects. The architect shall retain all common  
 law, statutory and other reserved rights, including, without limitation,  
 the copyright therein.



*James Schettino Architects* JOB# 1915

203.966.5552 Fax 203.966.7810  
 17 Elm Street New Canaan, Connecticut 06840  
 www.schettinoarchitects.com A5.4

02.04.2020 - ARB SUBMITTAL