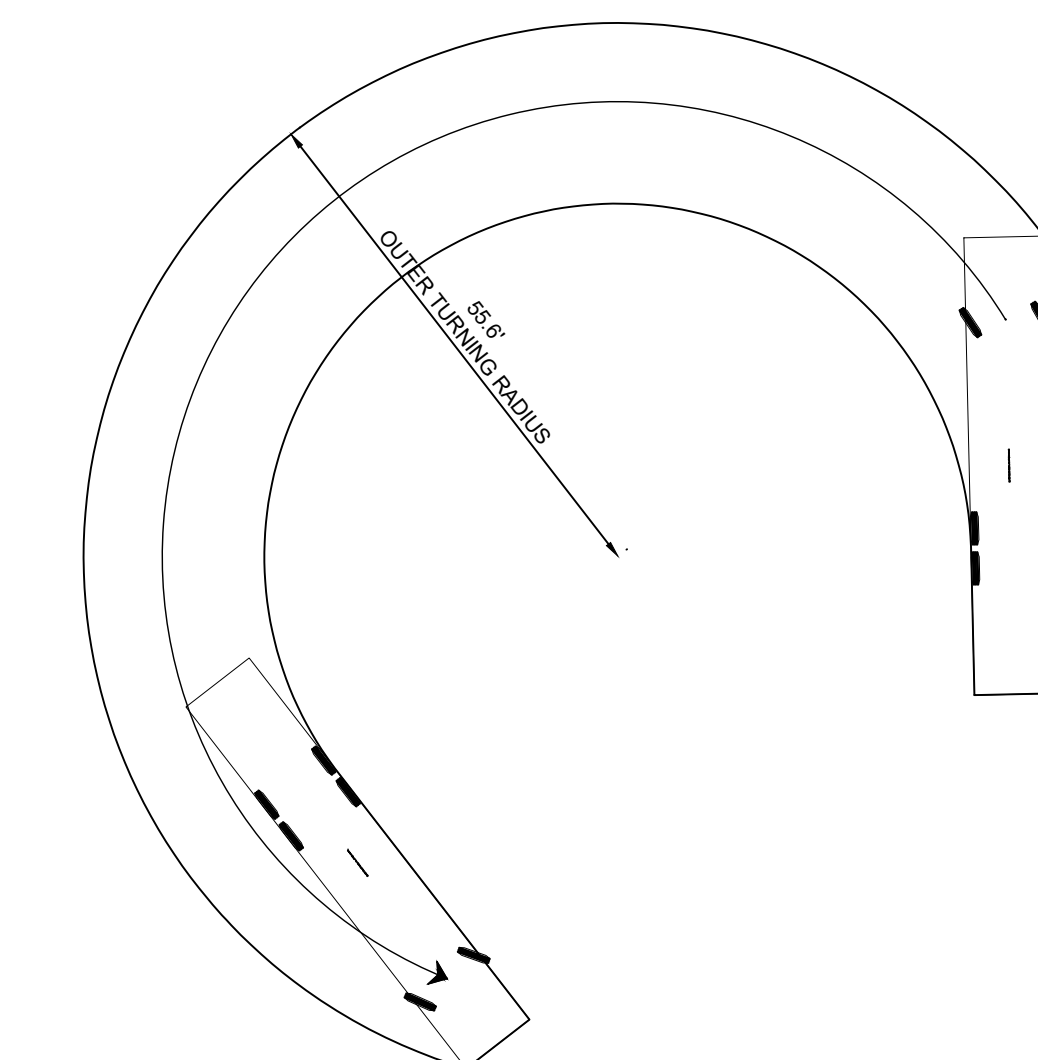
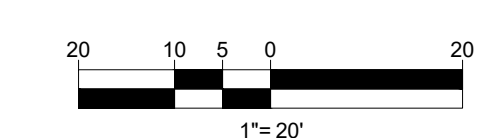


Fire Truck

	feet
Width	: 8.33
Track	: 8.33
Lock to Lock Time	: 6.0
Steering Angle	: 33.3



**BOSTON POST ROAD**  
 (AKA U.S. ROUTE 1)  
 (PUBLIC - VARIABLE WIDTH)  
 (PER REF #5)  
 ← TWO WAY TRAFFIC (ASPHALT ROADWAY) →



**BOHLER**  
 SITE CIVIL AND CONSULTING ENGINEERING  
 PROGRAM MANAGEMENT  
 LANDSCAPE ARCHITECTURE  
 SUSTAINABLE DESIGN  
 PERMITTING SERVICES  
 TRANSPORTATION SERVICES

**REVISIONS**

REV	DATE	COMMENT	CHECKED BY	DRAWN BY
1	08/10/20	PLANNING & ZONING SUBMISSION	JAB	CFD
2	09/10/20	UTILITY REVISIONS	DJO	JAB

**811**  
 Know what's below.  
 Call before you dig.  
 ALWAYS CALL 811  
 It's fast. It's free. It's the law.

**PERMIT SET**

THIS DRAWING IS INTENDED FOR MUNICIPAL AND/OR AGENCY REVIEW AND APPROVAL. IT IS NOT INTENDED AS A CONSTRUCTION DOCUMENT UNLESS INDICATED OTHERWISE.

PROJECT No.: W191393  
 DRAWN BY: DJO  
 CHECKED BY: JAB  
 DATE: 09/24/20  
 CAD ID: W191393-CVL-2

**PROPOSED SITE PLAN DOCUMENTS**

FOR

STORE #1624

MAP #32, LOT #9  
 306 BOSTON POST ROAD (ROUTE 1)  
 TOWN OF DARIEN  
 FAIRFIELD COUNTY,  
 CONNECTICUT

**BOHLER**

352 TURNPIKE ROAD  
 SOUTHBOROUGH, MA 01772  
 Phone: (508) 480-9900  
[www.BohlerEngineering.com](http://www.BohlerEngineering.com)

**J.A. BERNARDINO**

PROFESSIONAL ENGINEER  
 MASSACHUSETTS LICENSE No. 41712  
 RHODE ISLAND LICENSE No. 9114  
 CONNECTICUT LICENSE No. 27475

SHEET TITLE:  
**FIRE TRUCK TURN PLAN**

SHEET NUMBER:  
**1**

REVISION 2 - 09/10/20

P:\191393\DRAWINGS\PLAN SETS\REV\W191393-CVL-2--LAYOUT-C-01-TRUCK (2)