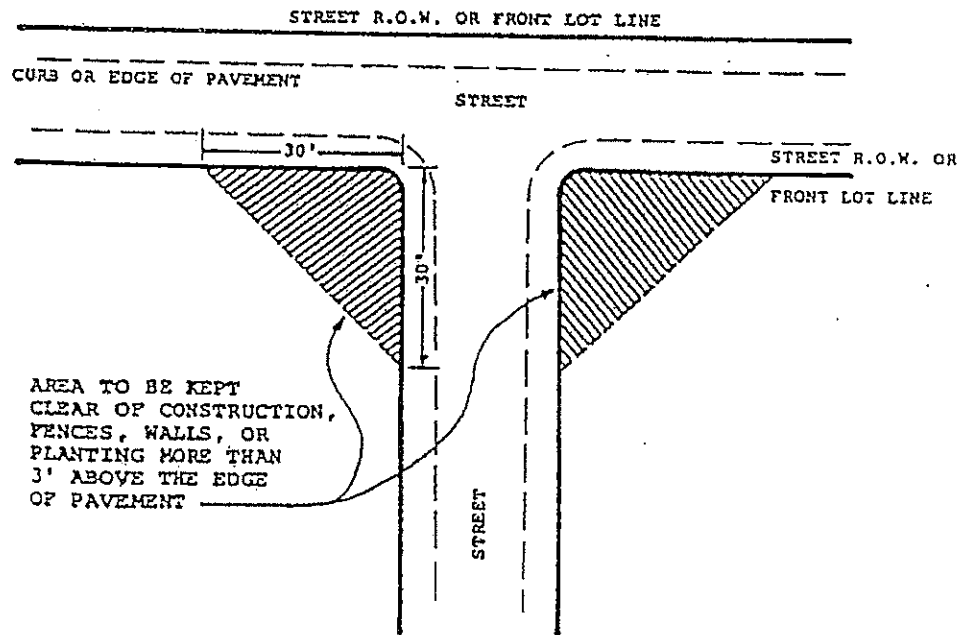


## SECTION 220. ILLUSTRATIONS AND GRAPHICS

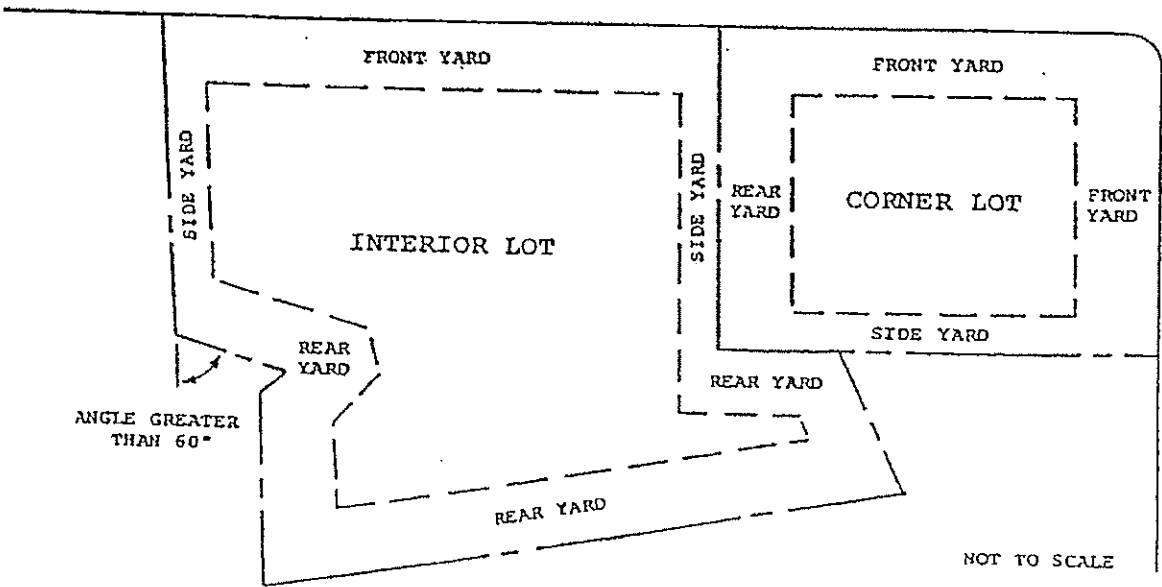
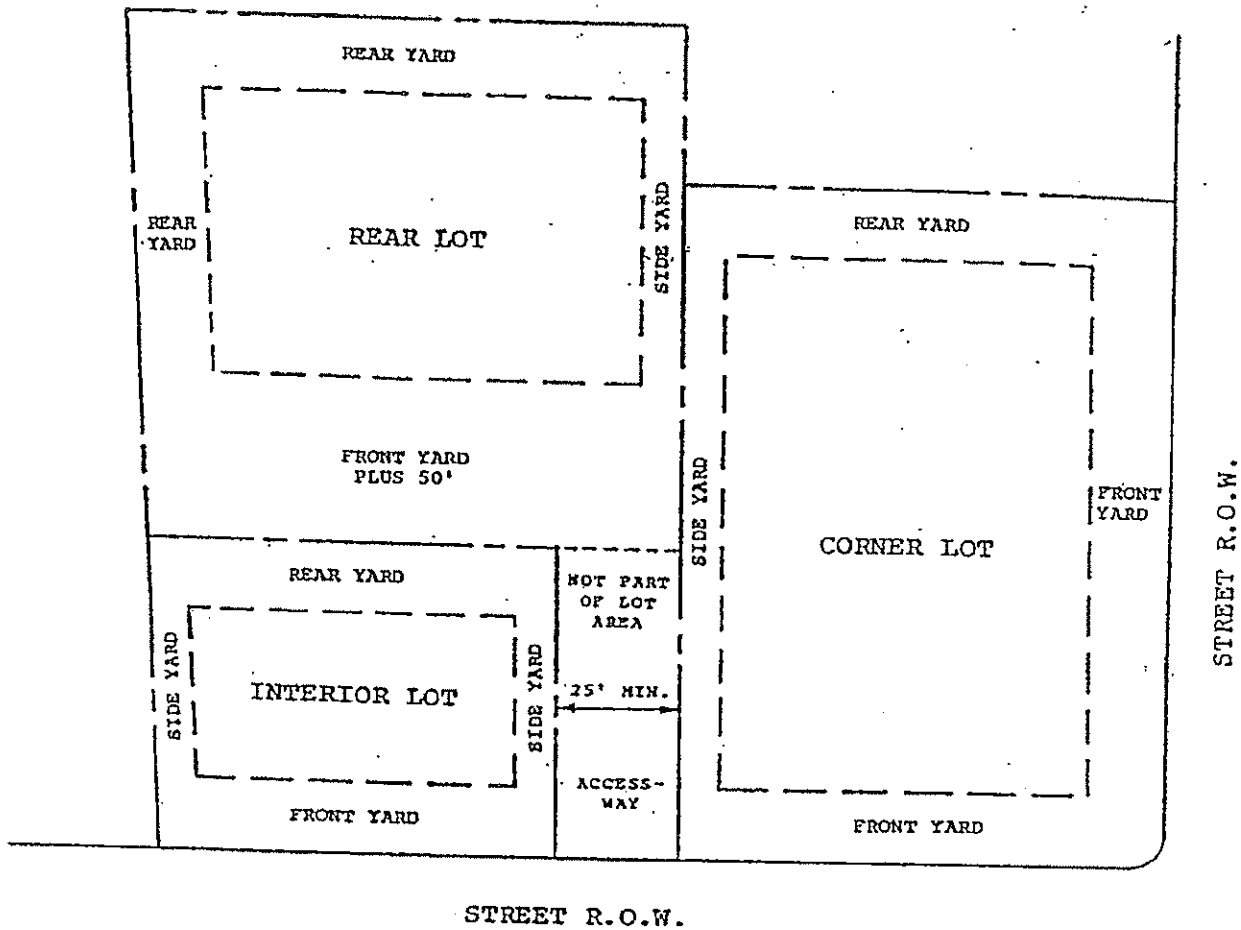
The following illustrations and graphics are intended to assist the user of the Regulations to understand the intent and interpretation of the definitions, terms, requirements, and other aspects of these Regulations. They do not supersede the written content of these Regulations. The illustrations and graphics are as follows:

- 221. Visibility at Residential Street Intersections
- 222. Typical Lots and Yard Areas
- 223. Building Coverage
- 224. Location of Principal and Accessory Structures
- 225. Measurements of Building Heights, Stories and Basements
- 226. Design Standards for Parking
- 227. Typical Arrangement for 90° Parking and Loading Area
- 228. Flood Plain Cross-Section
- 229. Sediment and Erosion Controls
- 230. Types of Signs
- 231. Lot Widths and Depths
- 232. Lighting Illustrations

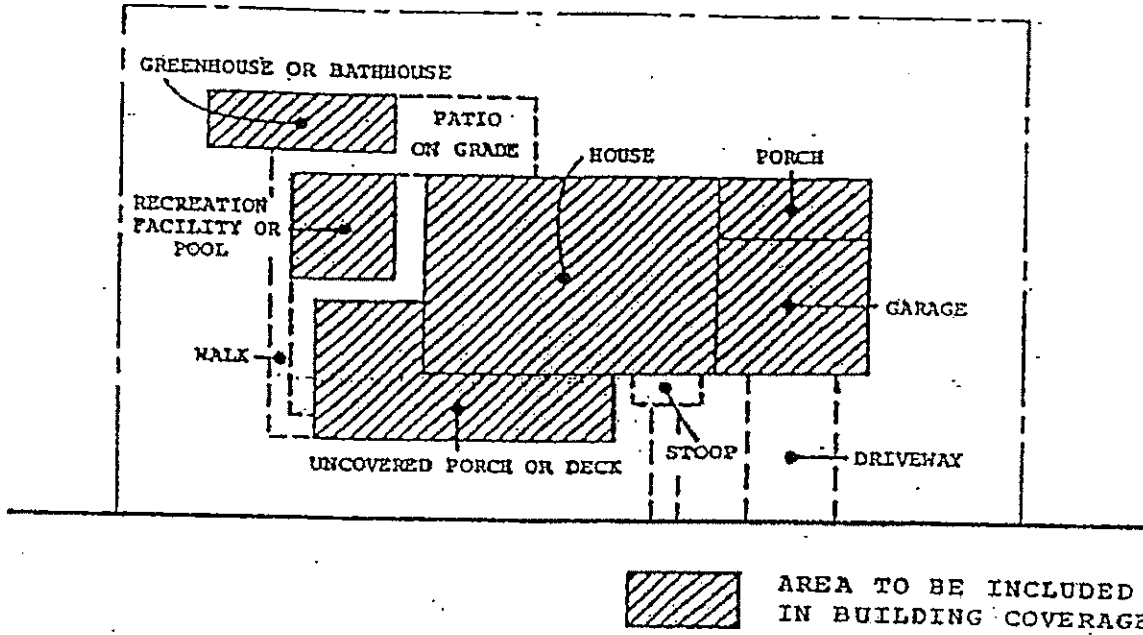
### 221. VISIBILITY AT RESIDENTIAL STREET INTERSECTIONS



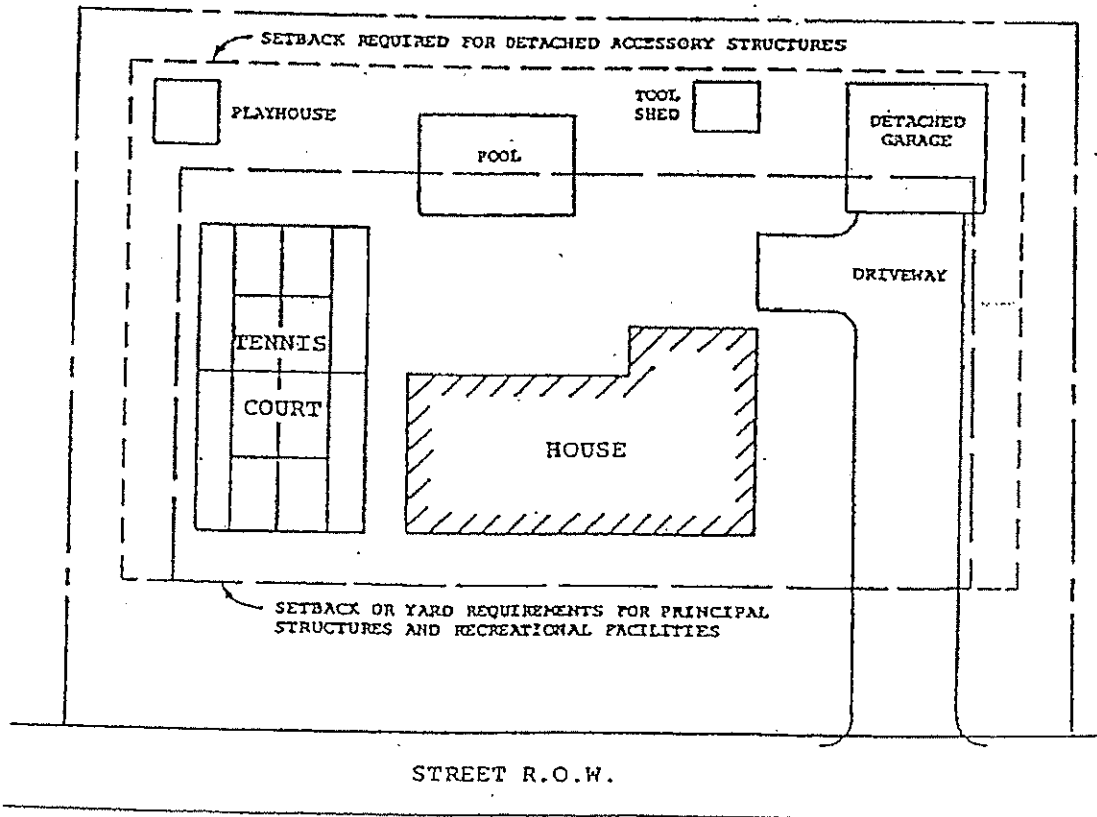
222. TYPICAL LOTS AND YARD AREAS



223. BUILDING COVERAGE

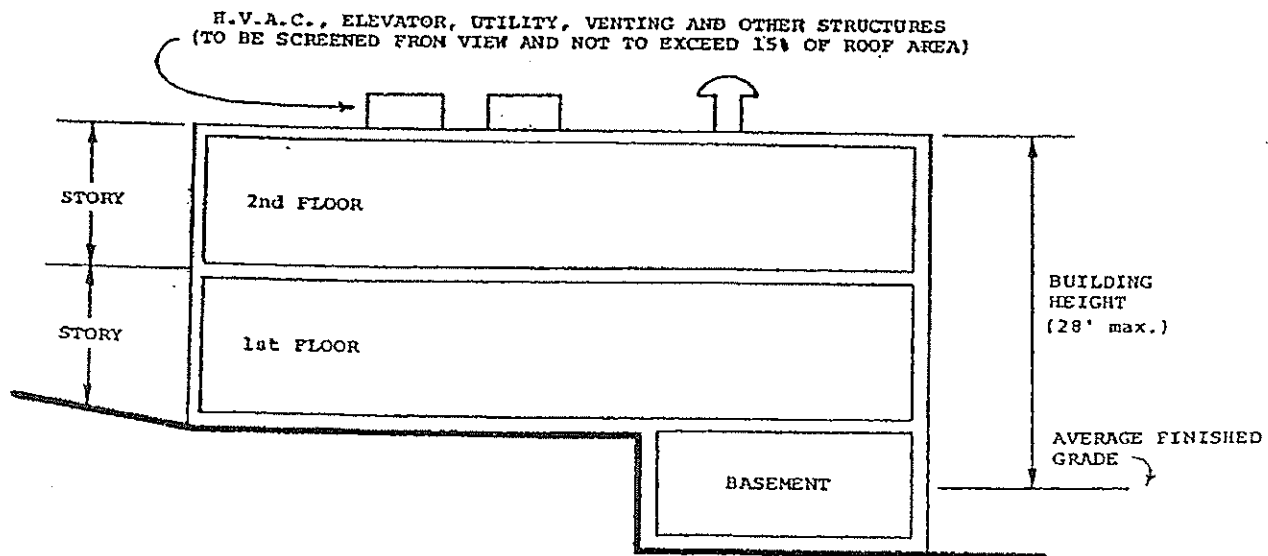
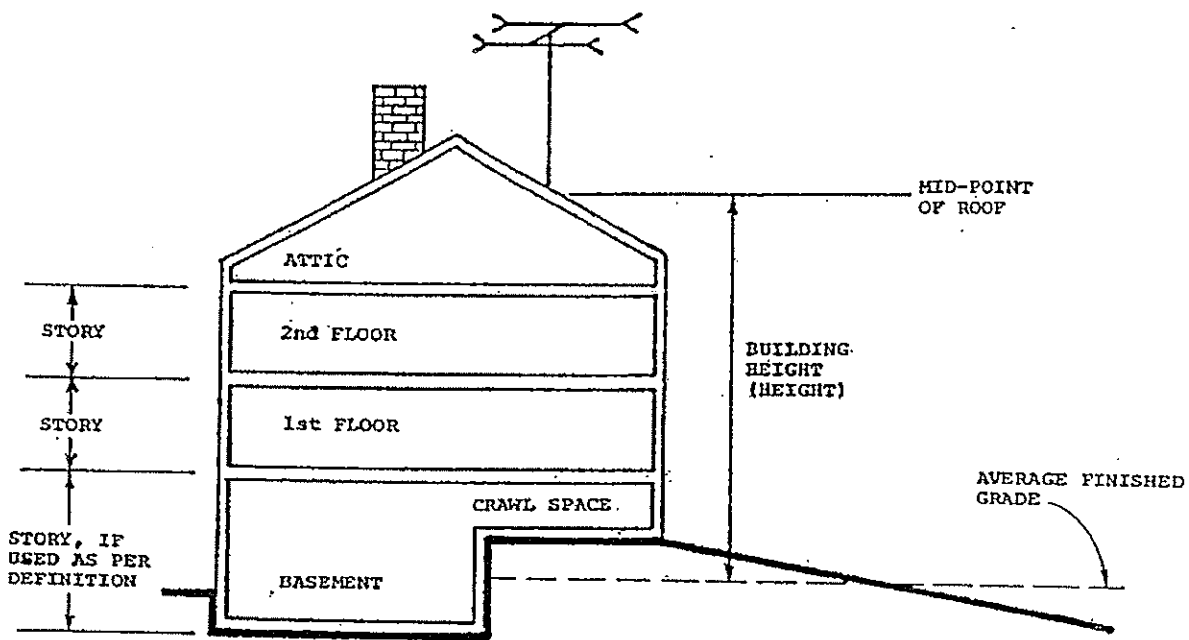


224. LOCATION OF PRINCIPAL AND ACCESSORY STRUCTURES



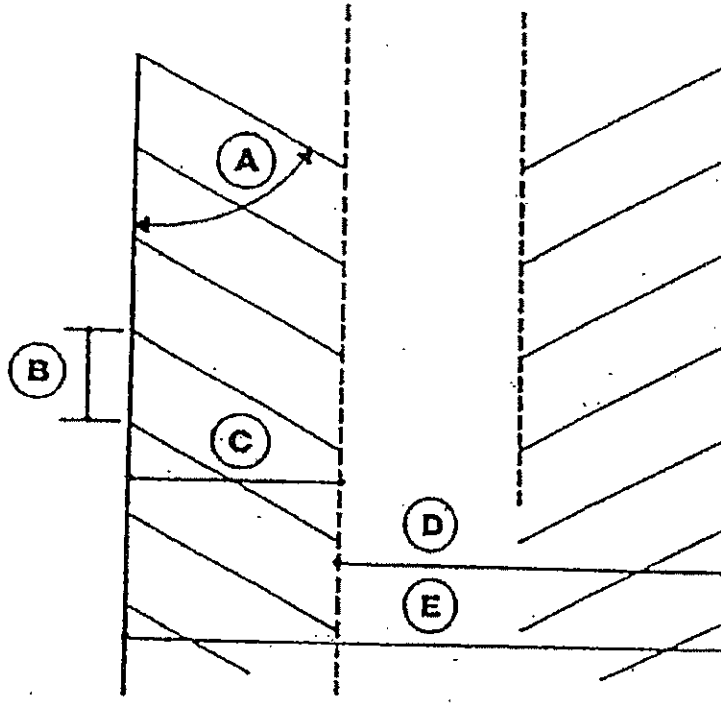
(NOT TO SCALE)

225. MEASUREMENTS OF BUILDING HEIGHTS, STORIES AND BASEMENTS



## 226. DESIGN STANDARDS FOR PARKING

### Minimum Dimensions

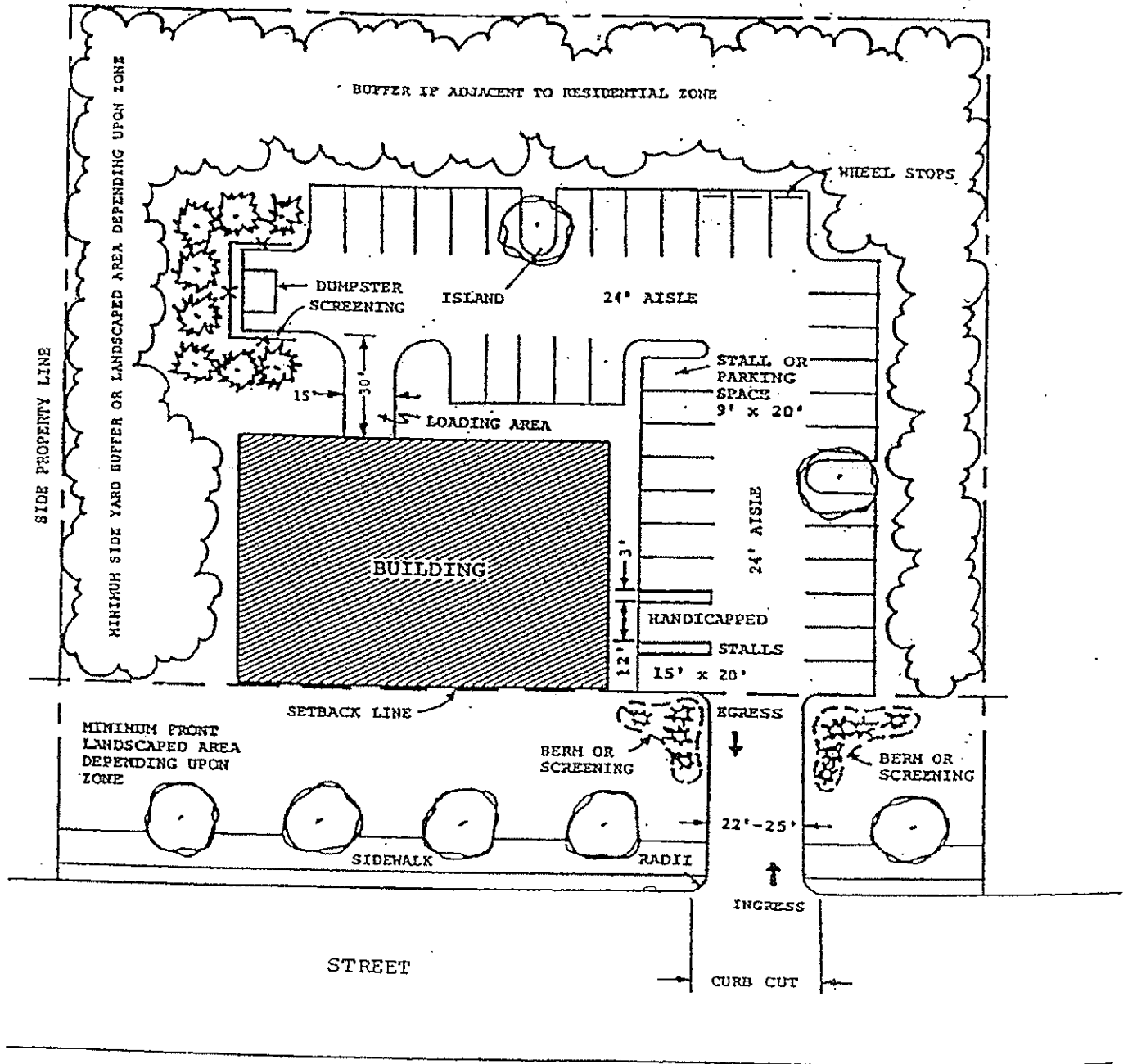


A.	Parking Angle	0°	45°	60°	90°
B.	Curb length per car	23'	12'9"	10'5"	9'
C.	Stall depth	9'	19'10"	21'0"	20'0"
D.	Lot width for 1 row + driveway	21'	33'0"	39'0"	44'0"
E.	Lot width for 2 rows + driveway	30'	53'0"	60'0"	64'0"

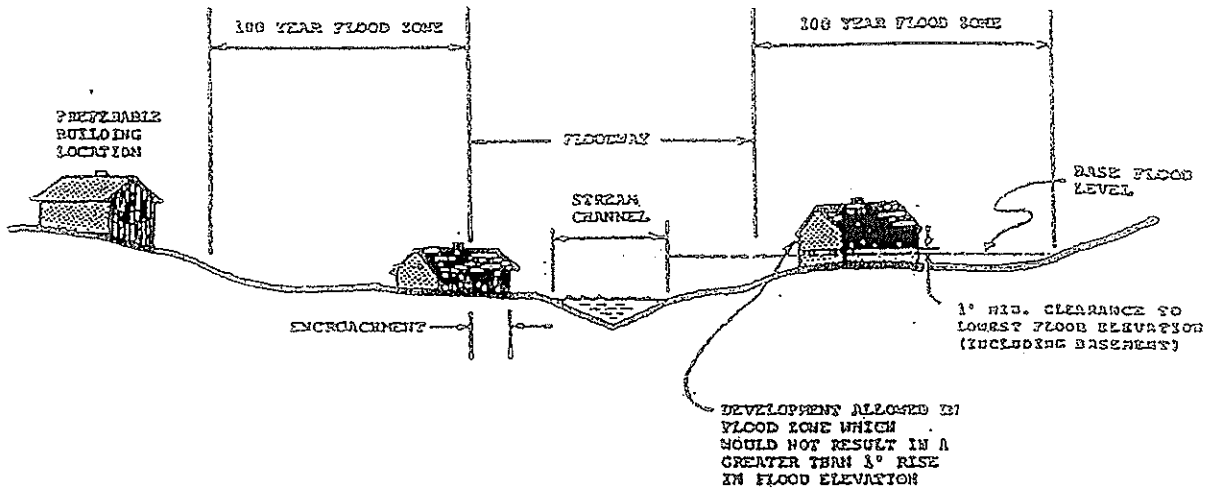
**NOTES:**

90 degree parking is encouraged. Extra width on end stalls is desirable. Additional driveway width is necessary for main or through circulation aisles.

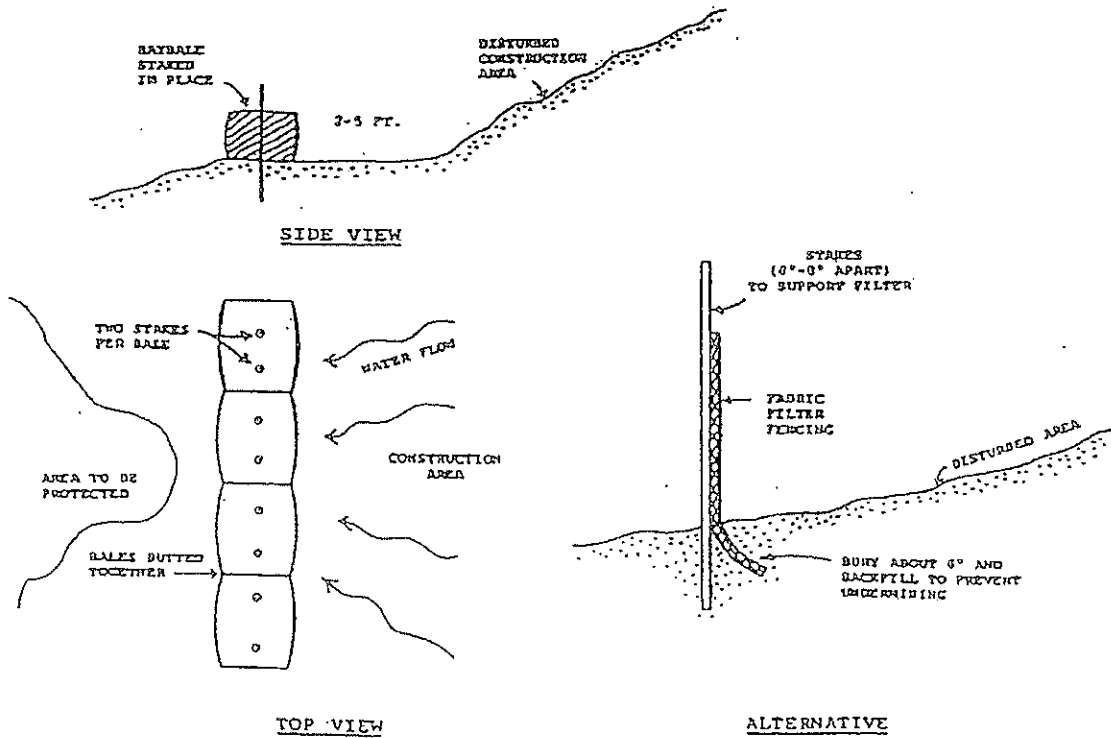
227. TYPICAL ARRANGEMENT FOR 90 DEGREE PARKING AND LOADING AREA



## 228. FLOOD PLAIN CROSS SECTION



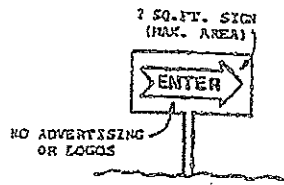
## 229. SEDIMENT AND EROSION CONTROLS



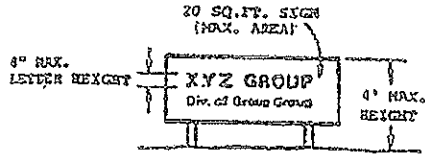
# 230. TYPES OF SIGNS

## 230. TYPES OF SIGNS

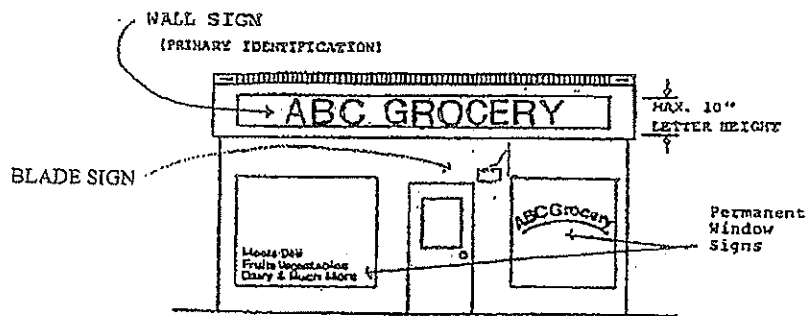
(Not to Scale)



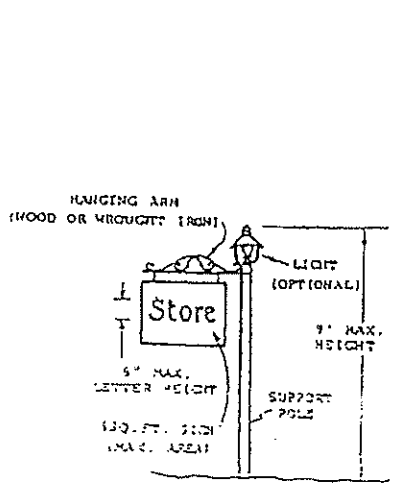
DIRECTIONAL SIGNS



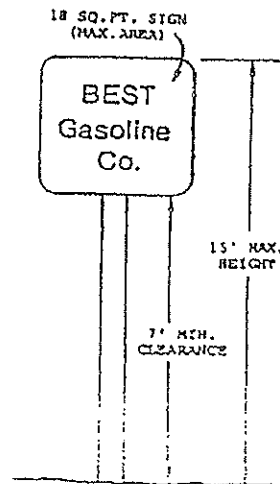
GROUND SIGN



BLADE, WALL SIGNS AND DISPLAY AREA

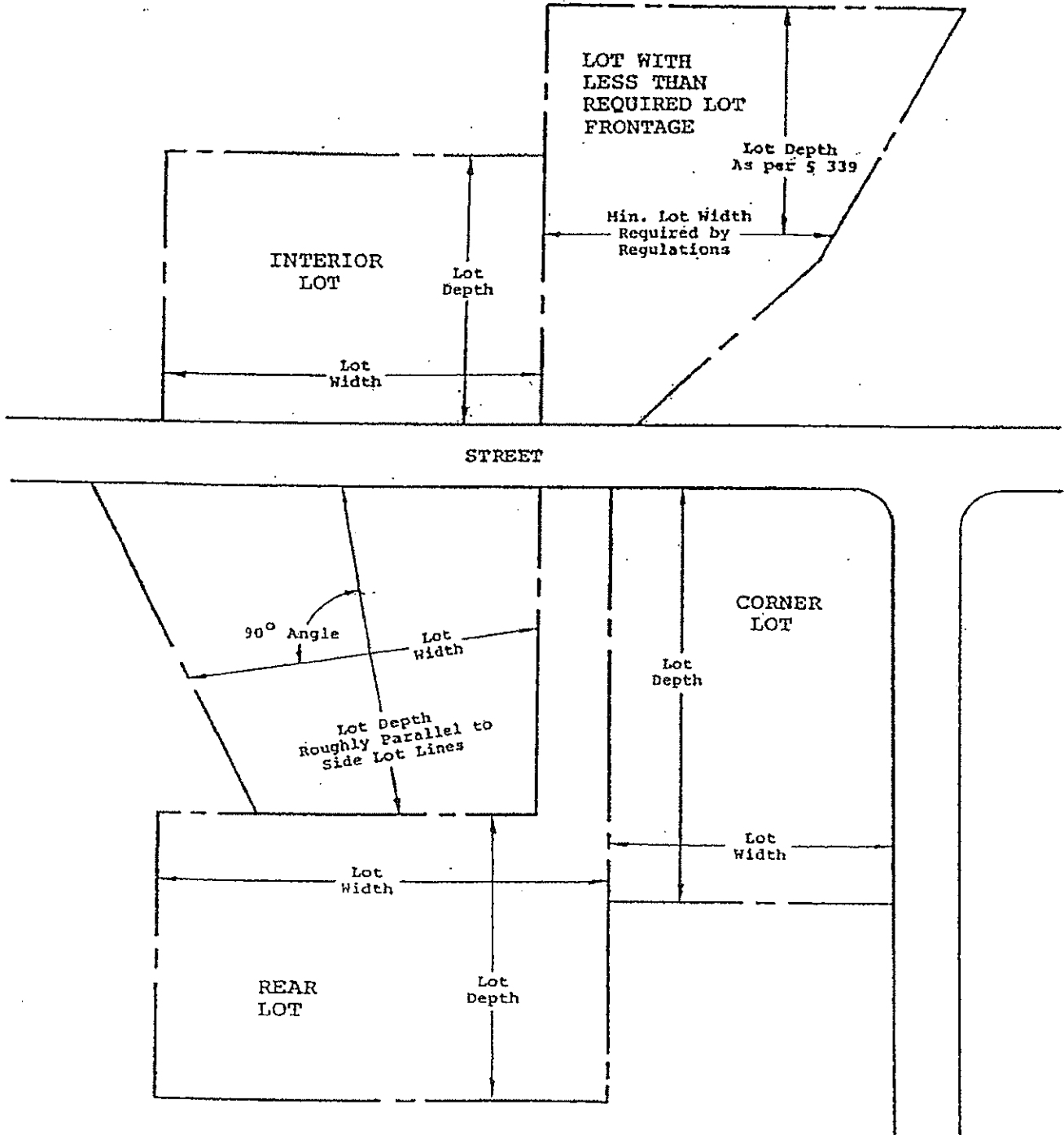


HANGING SIGN

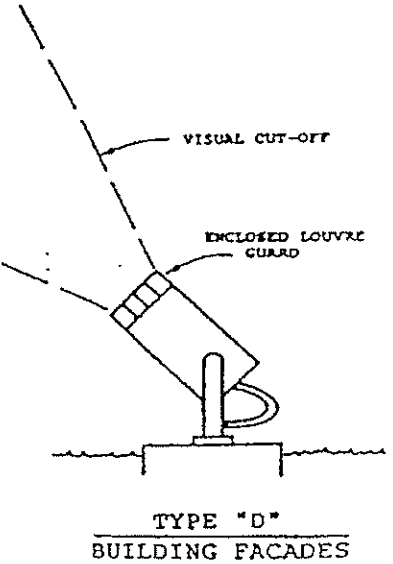
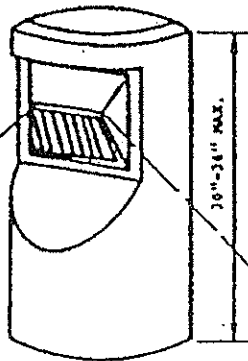
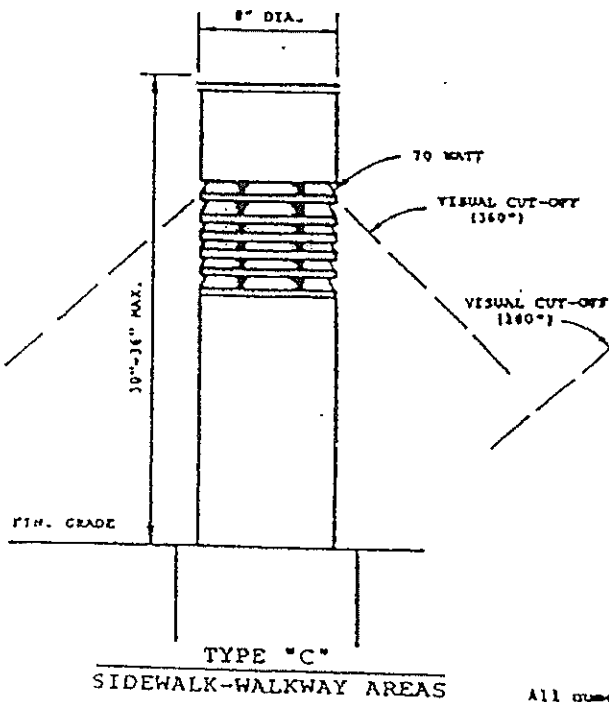
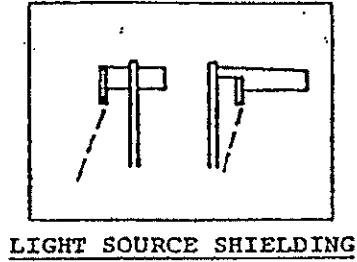
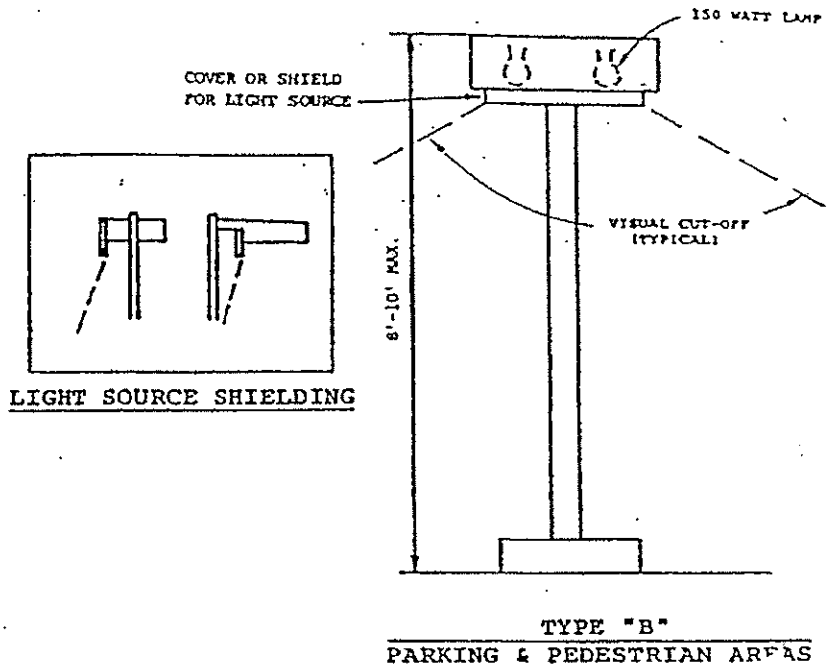
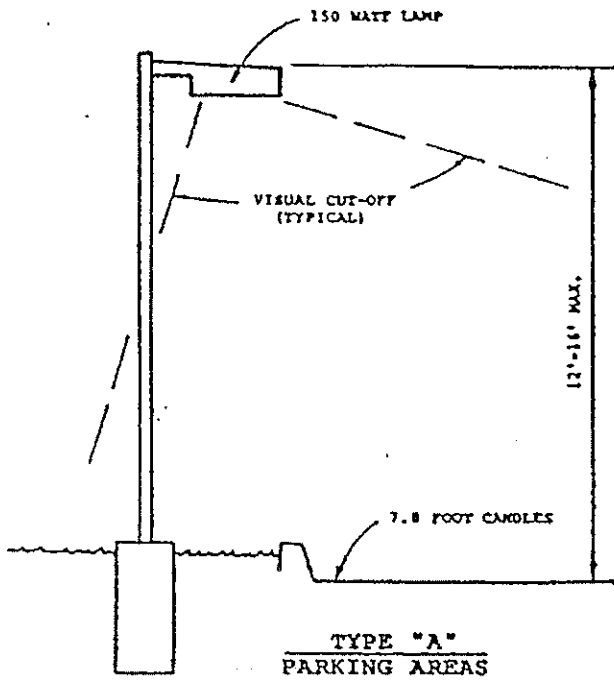


POLE SIGN

231. LOT WIDTHS AND DEPTHS



232. LIGHTING ILLUSTRATIONS



All numerical references, other than those shown as maximums, are suggested value ranges.